

**Survival Analysis Following LDR Brachytherapy Boost  
for Prostate Cancer at the Royal Surrey Hospital:  
A Comparison with the ASCENDE-RT Trial**

MOHAMED METAWE, MBBS, MSc, FRCR

SPECIALTY DOCTOR & LOCUM CONSULTANT ONCOLOGIST – ROYAL SURREY HOSPITAL

## Conflicts of Interest

- BXTA provided sponsorship to attend this conference





International Journal of Radiation  
Oncology\*Biography\*Physics

Volume 115, Issue 5, 1 April 2023, Pages 1061-1070



CLINICAL INVESTIGATION

# An Updated Analysis of the Survival Endpoints of ASCENDE-RT

Justin Oh MD \* †, Scott Tyldesley MD \* †  , Howard Pai MD ‡, Michael McKenzie MD \* †, Ross Halperin MD ¶, Graeme Duncan MD \* †, Gerard Morton MB ||, Mira Keyes MD \* †, Jeremy Hamm MSc ¶, W. James Morris MD \* †



---

Comparison with ASCENDE-RT

Purpose

---

Comparison between 2-stage and 4D

# Methods



DATABASE



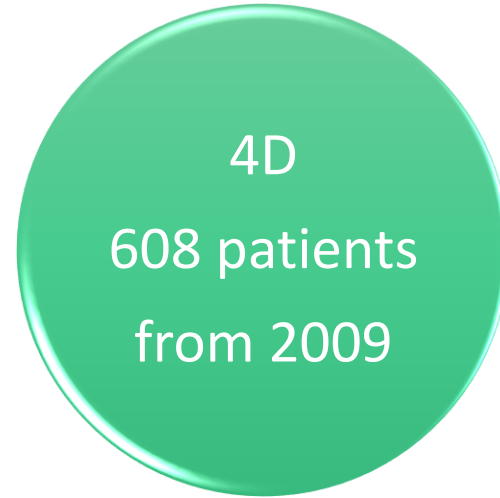
NHS SPINE SEARCH

# Results



# Demography

Royal Surrey



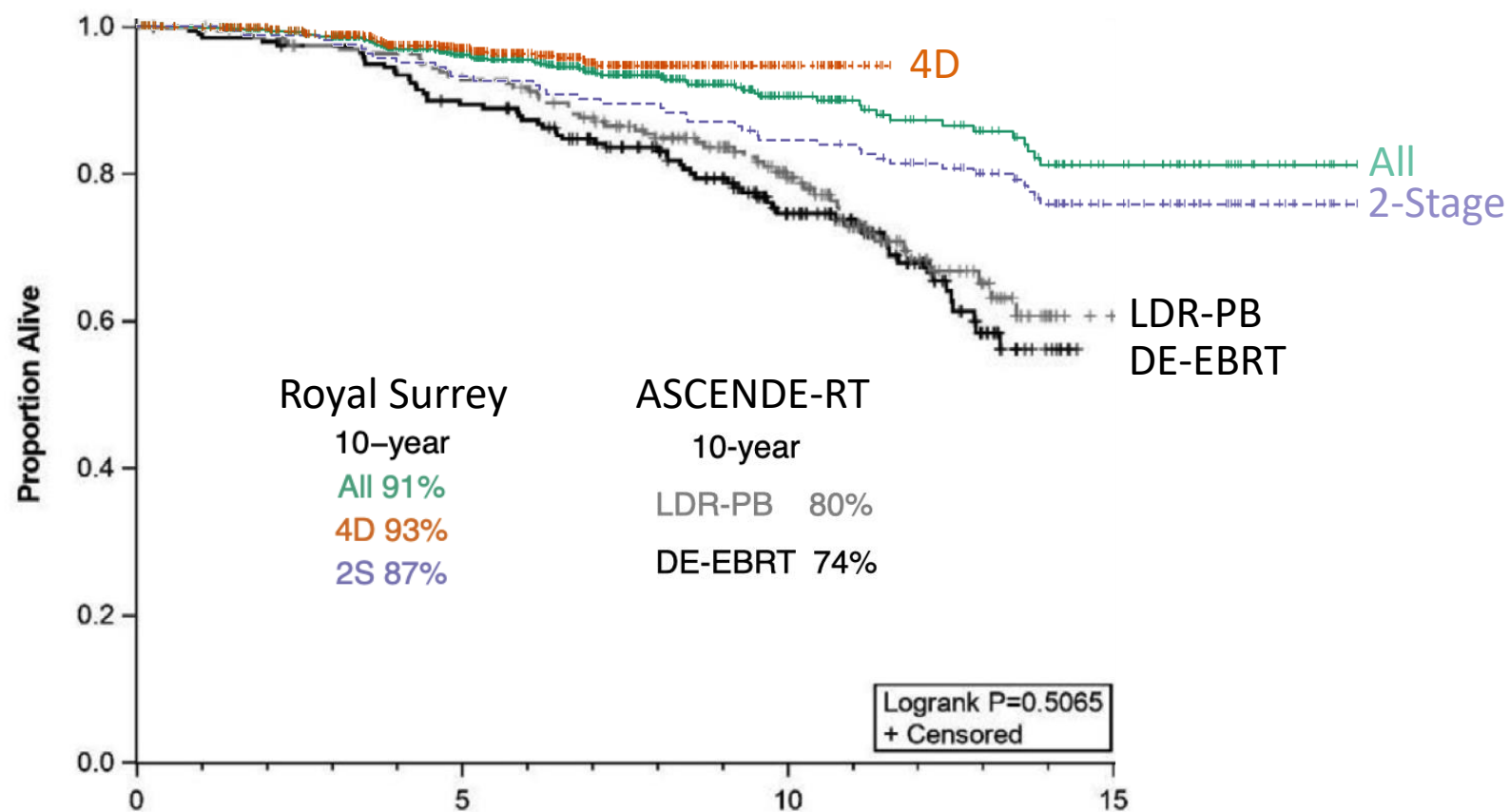
ASCENDE



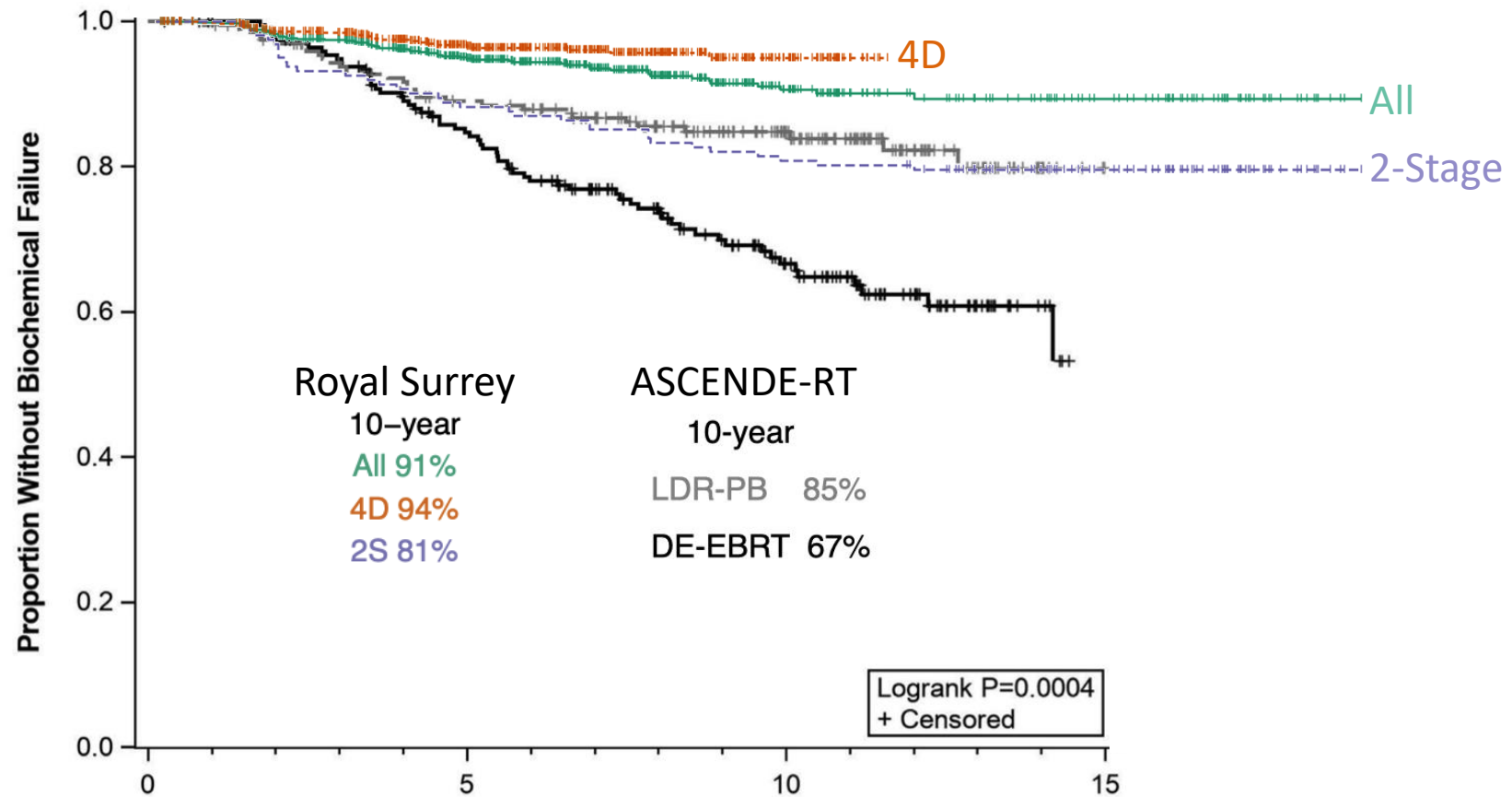
	<b>4D</b>	<b>2-STAGE</b>	<b>ASCENDE'S LDR-BB ARM</b>
<b>Median age (years)</b>	68	63	67
<b>Median follow-up (years)</b>	7	18	10
<b>PSA</b>			
≤10	49%	34%	49%
10-20	34%	55%	33.3%
≥20	17%	11%	17.7%
<b>GS</b>			
6	5%	24%	6.1%
7	63%	59%	52.5%
8-10	32%	17%	41.4%
<b>Risk Category</b>			
Intermediate	40%	42%	30%
High	60%	58%	70%



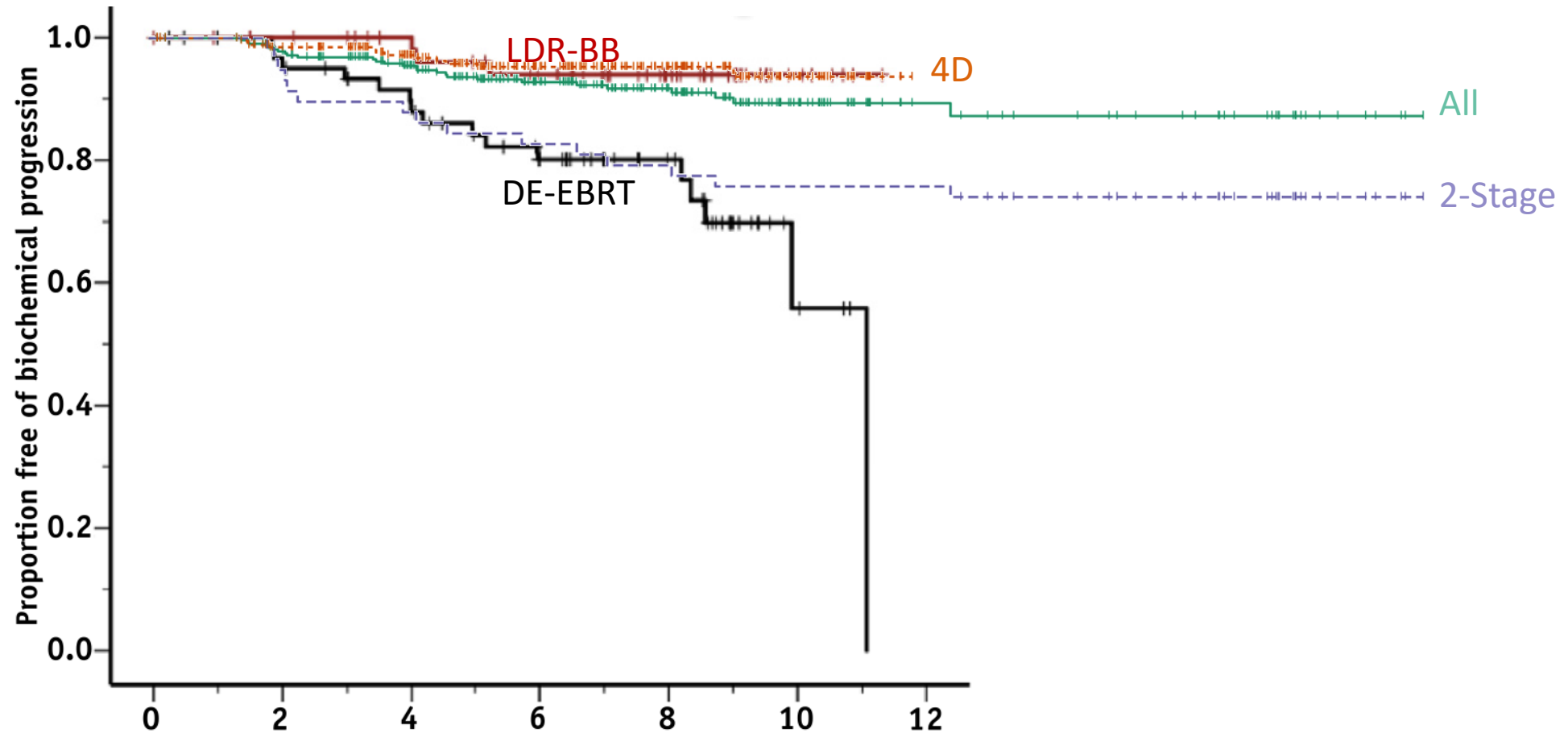
# Overall Survival



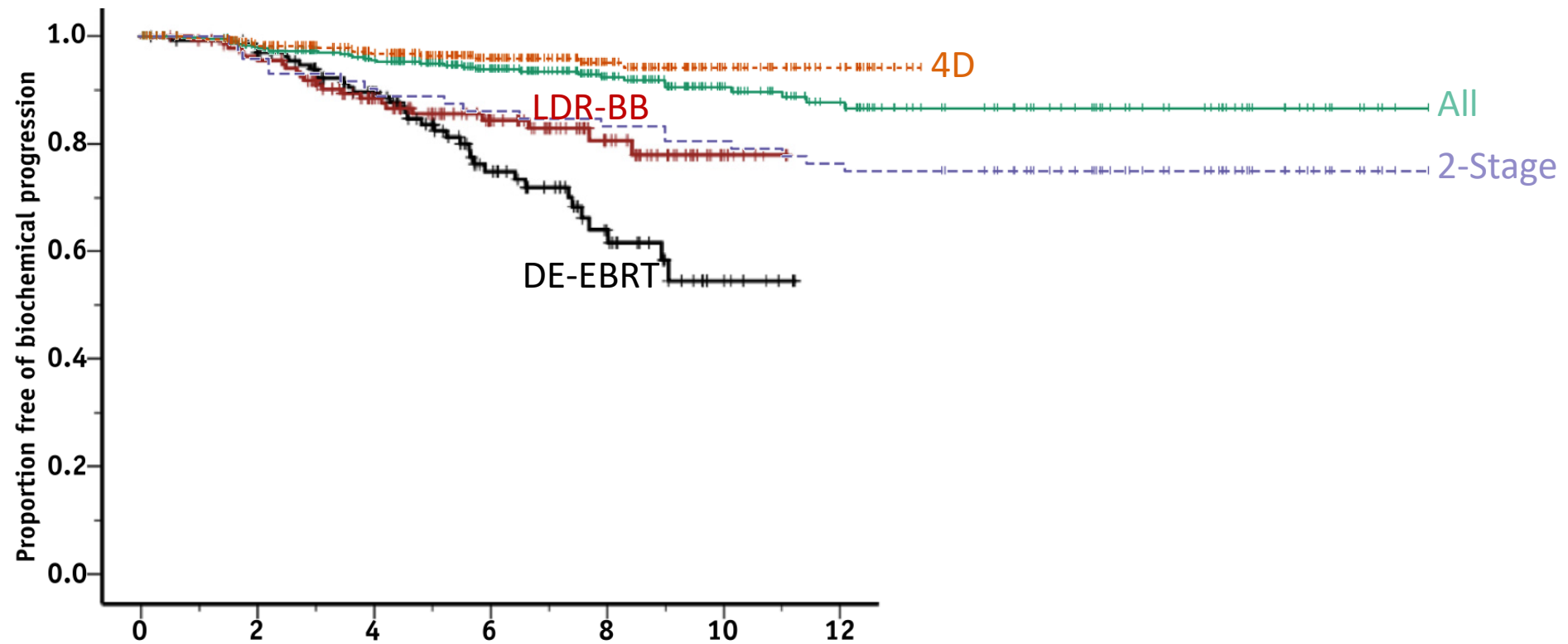
# Relapse-free Survival



# Intermediate Risk



# High Risk





What about morbidity  
& QoL?



Clinical Investigation

**ASCENDE-RT: An Analysis of Treatment-Related Morbidity for a Randomized Trial Comparing a Low-Dose-Rate Brachytherapy Boost with a Dose-Escalated External Beam Boost for High- and Intermediate-Risk Prostate Cancer**

Sree Rodda, MBBS, MRCP, FRCR,\* Scott Tyldesley, MD, FRCPC,\*<sup>†</sup>  
W. James Morris, MD, FRCPC,\*<sup>†</sup> Mira Keyes, MD, FRCPC,\*<sup>†</sup>



Clinical Investigation

**ASCENDE-RT: An Analysis of Health-Related Quality of Life for a Randomized Trial Comparing Low-Dose-Rate Brachytherapy Boost With Dose-Escalated External Beam Boost for High- and Intermediate-Risk Prostate Cancer**

Sree Rodda, MBBS, MRCP, FRCR,\* W. James Morris, MD, FRCPC,\*<sup>†</sup>  
Jeremy Hamm, MSC,<sup>‡</sup> and Graeme Duncan, MB, ChB, FRCPC\*<sup>†</sup>

*\*BC Cancer Agency, Vancouver Centre, Vancouver, British Columbia, Canada; <sup>†</sup>Department of Surgery, University of British Columbia, Vancouver, British Columbia, Canada; <sup>‡</sup>Department of Population Oncology, BC Cancer Agency, Vancouver Centre, Vancouver, British Columbia, Canada*



# GU Morbidity

---

	<b>4D</b>	<b>2S</b>	<b>ASCENDE (LDR-BB)</b>
<b>Stricture/Stenosis</b>	29 (5%)	7 (6%)	16 (8%)
<b>Pad usage</b>			
≤2 pads	56 (9%)	11 (9%)	22 (12%)
>2 pads	16 (3%)	4 (3%)	9 (5%)



Patient Reported Outcome Measures (PROMs)



# Male Health Inventory Questionnaire

These questions are designed to assess your **ease of urination**.

1. **Incomplete Emptying** Over the past month, **how often** have you had a sensation of not emptying your bladder completely?

Not at all    Less than 1 time in 5    Less than half the time    About half the time    More than half the time    Almost always

0     1     2     3     4     5

2. **Frequency** Over the past month, **how often** have you had to urinate again less than 2 hours after you finished urinating?

Not at all    Less than 1 time in 5    Less than half the time    About half the time    More than half the time    Almost always

0     1     2     3     4     5

3. **Intermittency** Over the past month, **how often** have you found you had stopped and started again several times when you urinated?

Not at all    Less than 1 time in 5    Less than half the time    About half the time    More than half the time    Almost always

0     1     2     3     4     5

4. **Urgency** Over the past month, **how often** have you found it difficult to postpone urination?

Not at all    Less than 1 time in 5    Less than half the time    About half the time    More than half the time    Almost always

0     1     2     3     4     5

5. **Weak Stream** Over the past month, **how often** have you had a weak urinary stream?

Not at all    Less than 1 time in 5    Less than half the time    About half the time    More than half the time    Almost always

0     1     2     3     4     5

6. **Straining** Over the past month, **how often** have you had to push or strain to begin urination?

Not at all    Less than 1 time in 5    Less than half the time    About half the time    More than half the time    Almost always

0     1     2     3     4     5

7. **Nocturia** Over the past month, **how many times** on average did you get up each night to urinate?

None    1 time    2 times    3 times    4 times    5 times or more

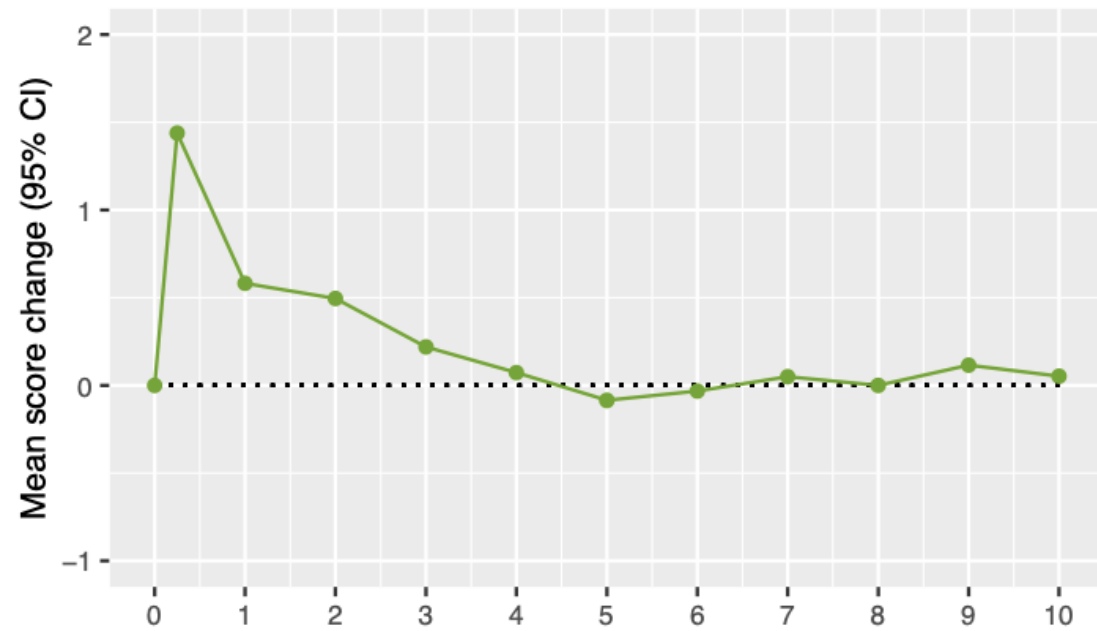
0     1     2     3     4     5

**Quality of Life due to Urinary Symptoms** If you were to spend the rest of your life with your urinary condition just the way it is now, **how would you feel** about that?

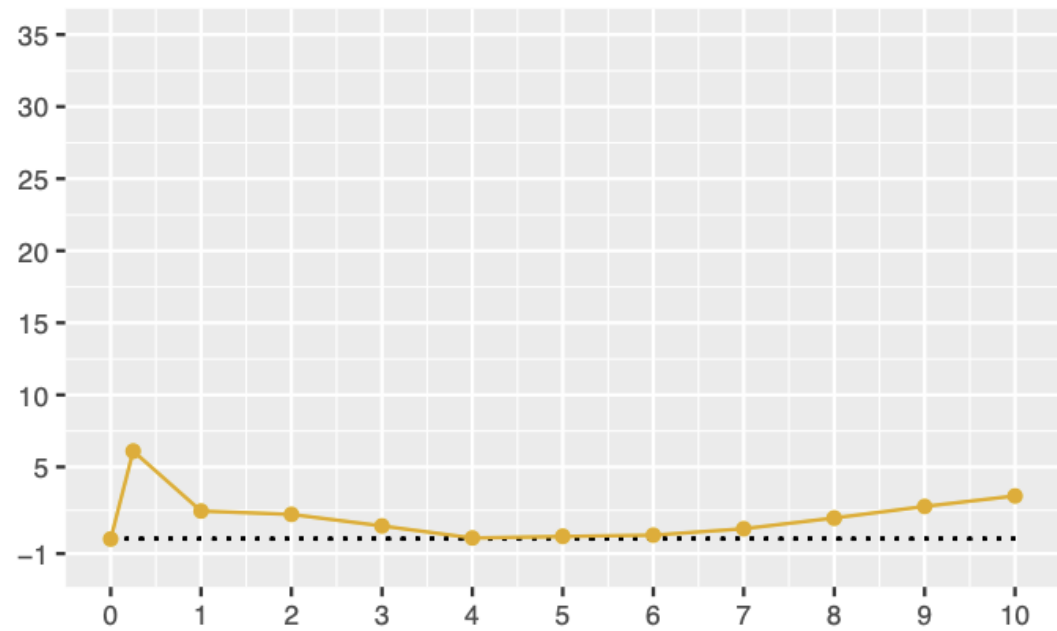
Delighted    Pleased    Mostly satisfied    Mixed (Equally satisfied & dissatisfied)    Mostly dissatisfied    Unhappy    Terrible

0     1     2     3     4     5     6

### Urinary QoL



### IPSS



# Conclusions

Favorable survival outcomes of LDR-BB in line with ASCENDE-RT

4D seems to offer better outcomes compared to 2-Stage

Patient-reported urinary QoL was preserved long-term

*Thank You!*

## Acknowledgement

- Santiago, our clinical scientist
- CNS Team, the backbone of our brachytherapy service!
- Patients

